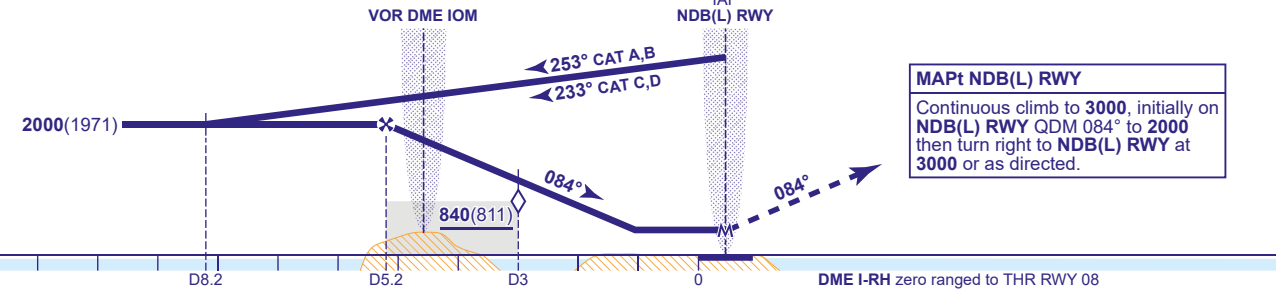


RECOMMENDED PROFILE Gradient 6.08%, 370FT/NM					
DME I-RH	5	4	3 (SDF)	2	1
ALT(HGT)	1930(1901)	1560(1531)	1190(1161)	820(791)	450(421)

Arrival not below 3000 or MSA whichever is the higher.



Aircraft Category		A	B	C	D	Rate of descent	G/S KT	160	140	120	100	80
OCA (OCH)	Procedure	420(391)	420(391)	420(391)	420(391)		FT/MIN	990	860	740	620	490
VM(C)OCA (OCH AAL)	Total Area	660(608)	760(708)	1980(1928)	1980(1928)							
	South of RWY 08/26	450(398)	550(498)	830(778)	990(938)							
	East of RWY 03/21	660(608)	670(618)	1190(1138)	1190(1138)							

ALTERNATIVE PROCEDURE EXTENDED HOLDING PATTERN  
From IOM VOR holding pattern, extend the outbound leg descending to 2000(1971). At I-RH DME 9 turn right to establish on the FAT then continue as for full procedure.

- NOTE 1 Aircraft will normally be required to hold not lower than 3000.  
2 FAT offset 5° from RWY 08 C/L and intercepts nominally 1.2NM before THR.